



Specification

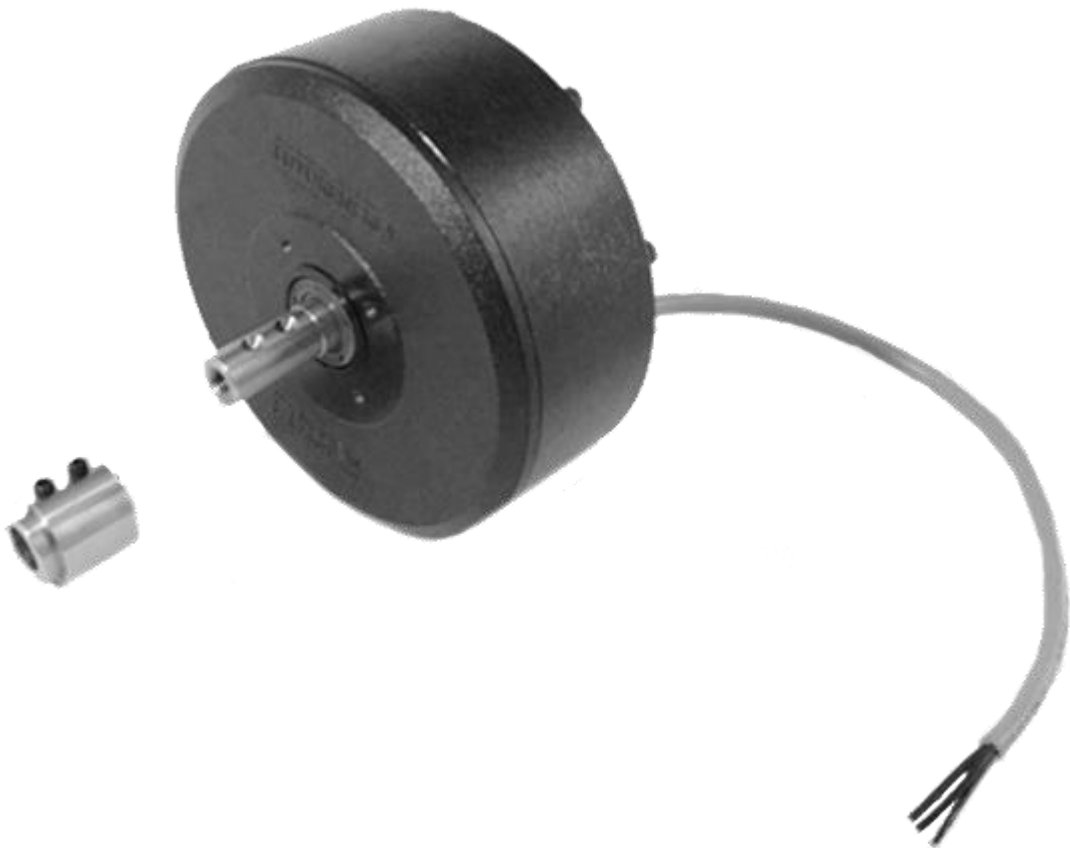
Futureenergy, 24V 1kW Permanent Magnet Generator

Prepared By

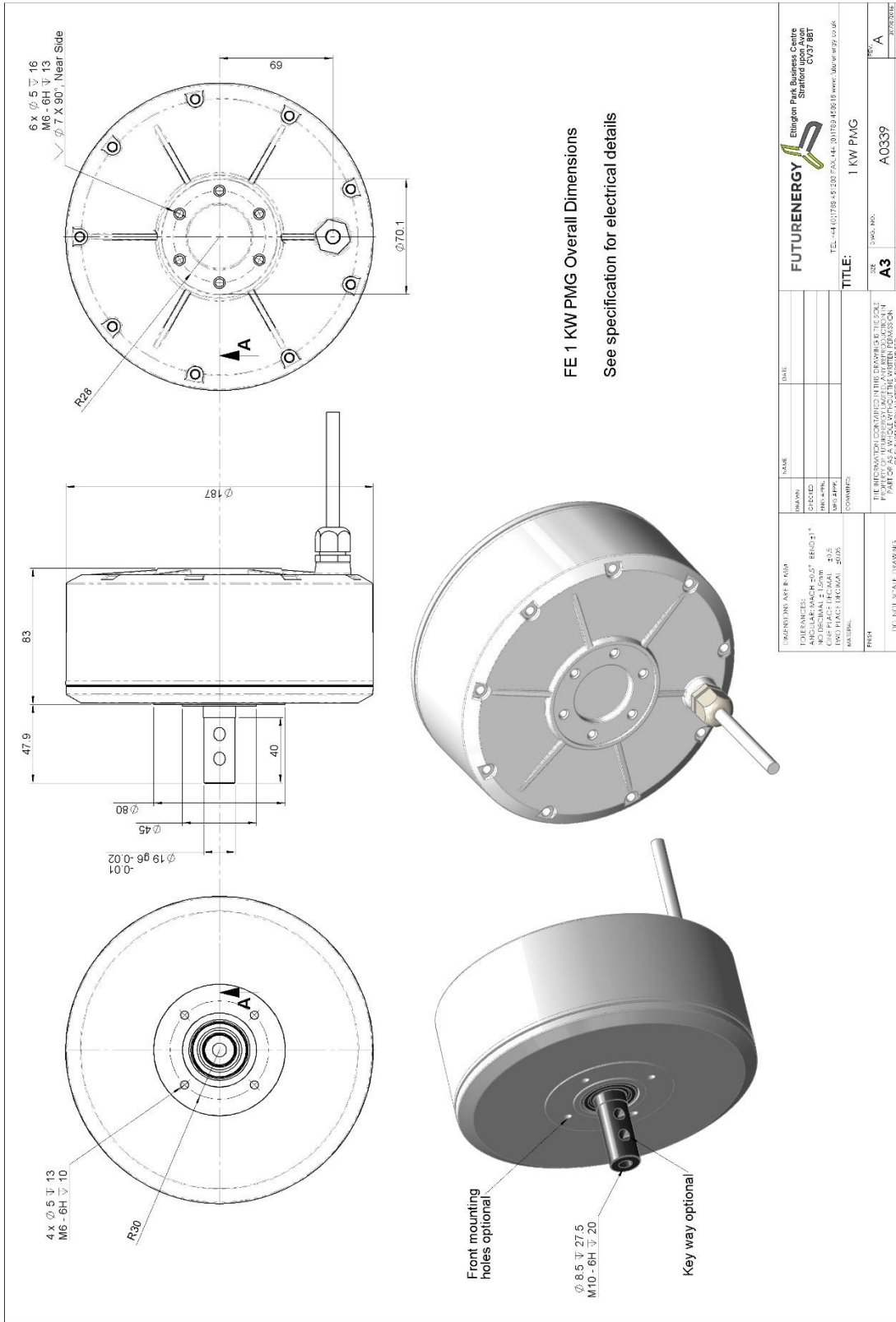
D Nangle, Sept 2016

Contents

Dimensions	3
Specification	4
Graph: Power vs RPM @ Load Resistances (Ω)	5
Graph: Terminal Voltage vs RPM @ Load Resistances	6
Graph: Terminal Current vs RPM @ Load Resistances	7
Graph: DC Load Voltage vs RPM @ Load Resistances	8
Graph: DC Load Current vs RPM @ Load Resistances	9
Graph: Open RMS L/L Voltage vs RPM	10
Graph: Open DC Voltage vs RPM	11
Graph: Fundamental Frequency vs RPM	12
Graph: Efficiency vs Current @ 750 RPM Constant	13
Graph: Cogging Torque	14



Dimensions



DESIGNED BY: []	DATE: []	FUTUREENERGY Ellington Park, 25, John Copley Stratford upon Avon CV37 8BT TEL: +44(0)1789 432877 FAX: +44(0)1789 432618 www.futureenergy.co.uk
CHECKED BY: []		
APPROVED BY: []		
DATE: []		
THE INFORMATION CONTAINED IN THIS DRAWING IS THE SOLE PROPERTY OF FUTUREENERGY LIMITED. IT IS FOR THE EXCLUSIVE USE OF THE CUSTOMER AND IS NOT TO BE REPRODUCED OR TRANSMITTED IN ANY FORM OR BY ANY MEANS, ELECTRONIC OR MECHANICAL, INCLUDING PHOTOCOPYING, RECORDING, OR BY ANY INFORMATION STORAGE AND RETRIEVAL SYSTEM.		TITLE: 1 KW PMG
FIG. NO.: A3		REV. NO.: A
DATE: 07/02/2012		SCALE: 1:1

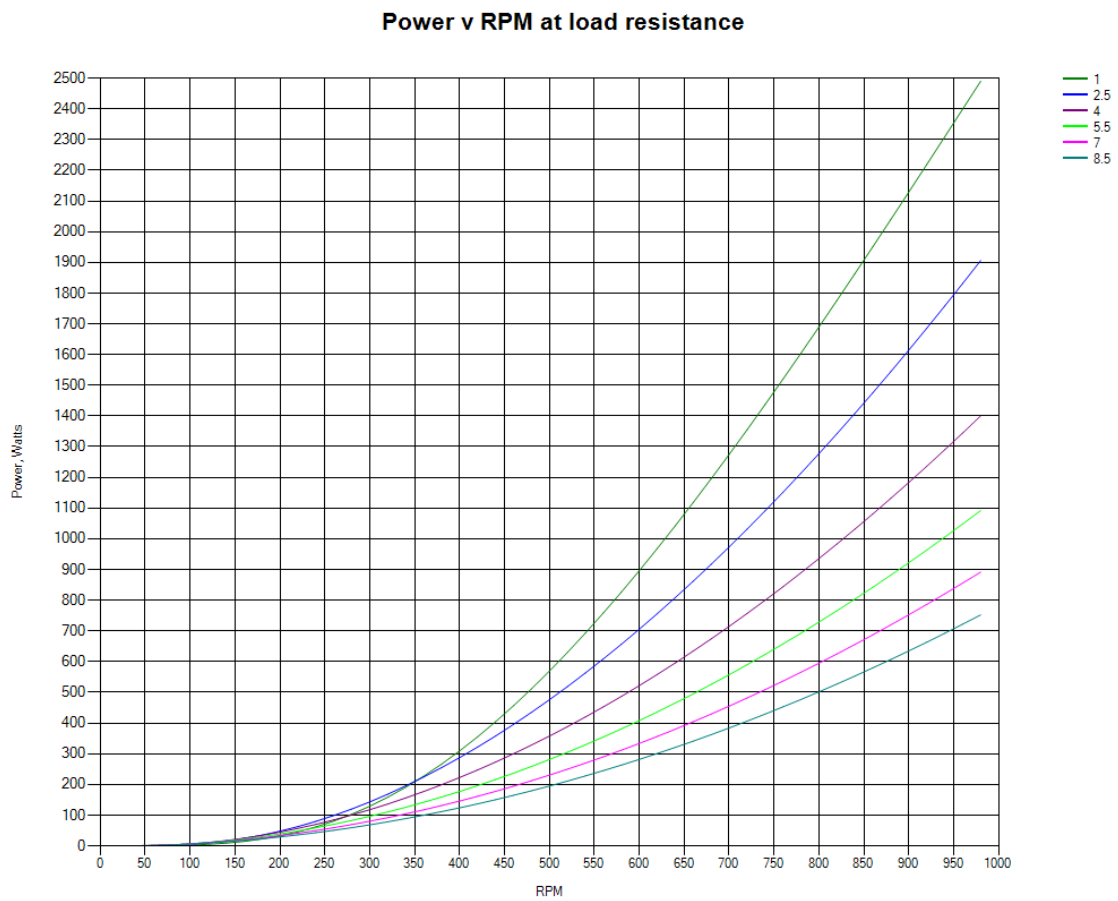
Specification

Nominal Rated Power	1 kW
Nominal RPM	750 RPM
Line / Line RMS Open Voltage	20V (24V DC @ 300 RPM)*
Nominal Line Current	16 Amps**
Configuration	3 Phase, Star wound AC output
Line / Line Winding Resistance	0.4 Ohms
Nominal Self Inductance	0.4168 mH
Maximum Over-Load Power	1.5 kW
Efficiency	92 %
Maximum Cogging Torque (Excluding Shaft Seals)	< 0.5 Nm
Duty @ Nominal Power	100%
Insulation Class	H
Mounting	Any
Shaft Material	Stainless Steel
Magnet Material	NdFeB
Shell Material	LM25 Aluminium
Protection	IP54
Poles	12
Winding code	P123-T14-W1.5

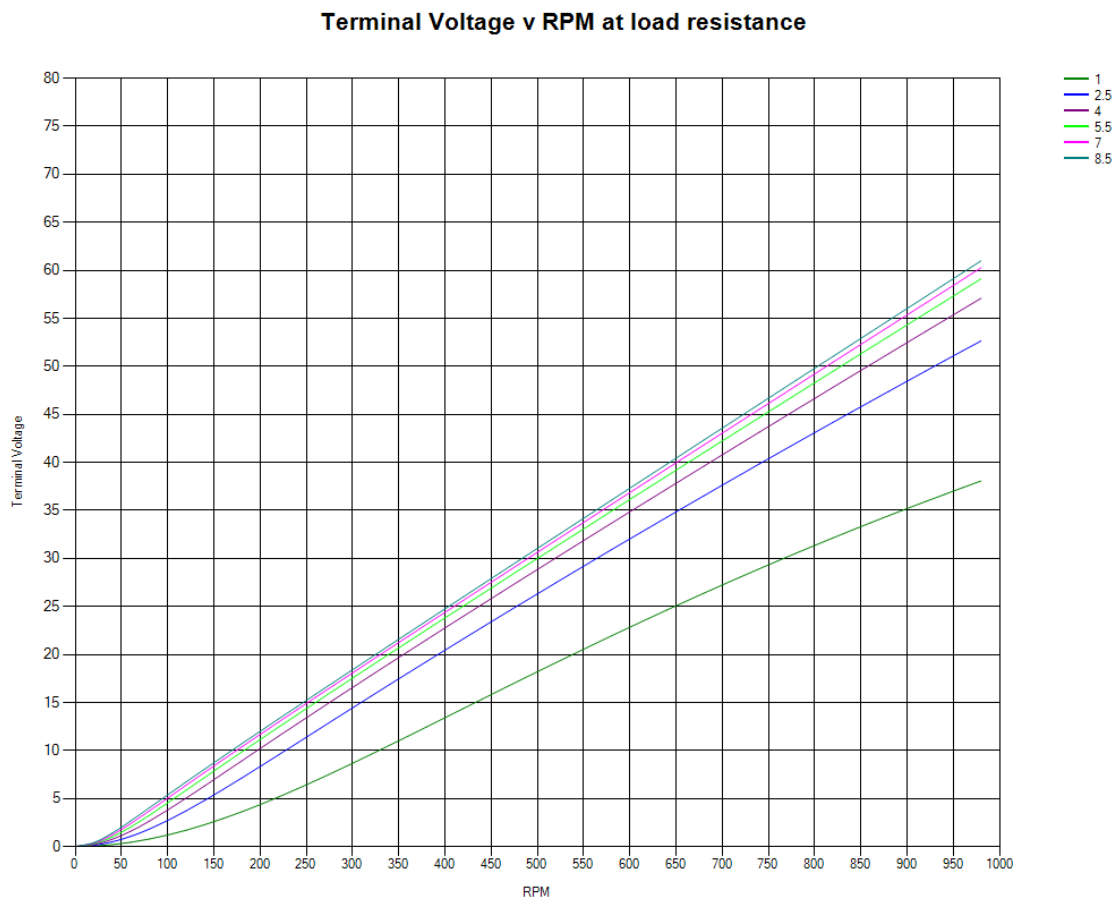
* DC Voltage requires an additional bridge rectifier

** Voltage and current will depend on connected electrical system. For example; a system charging 24V battery bank will reduce generator voltage to the battery charge voltage and increase current. Values quoted assume fixed resistance loads.

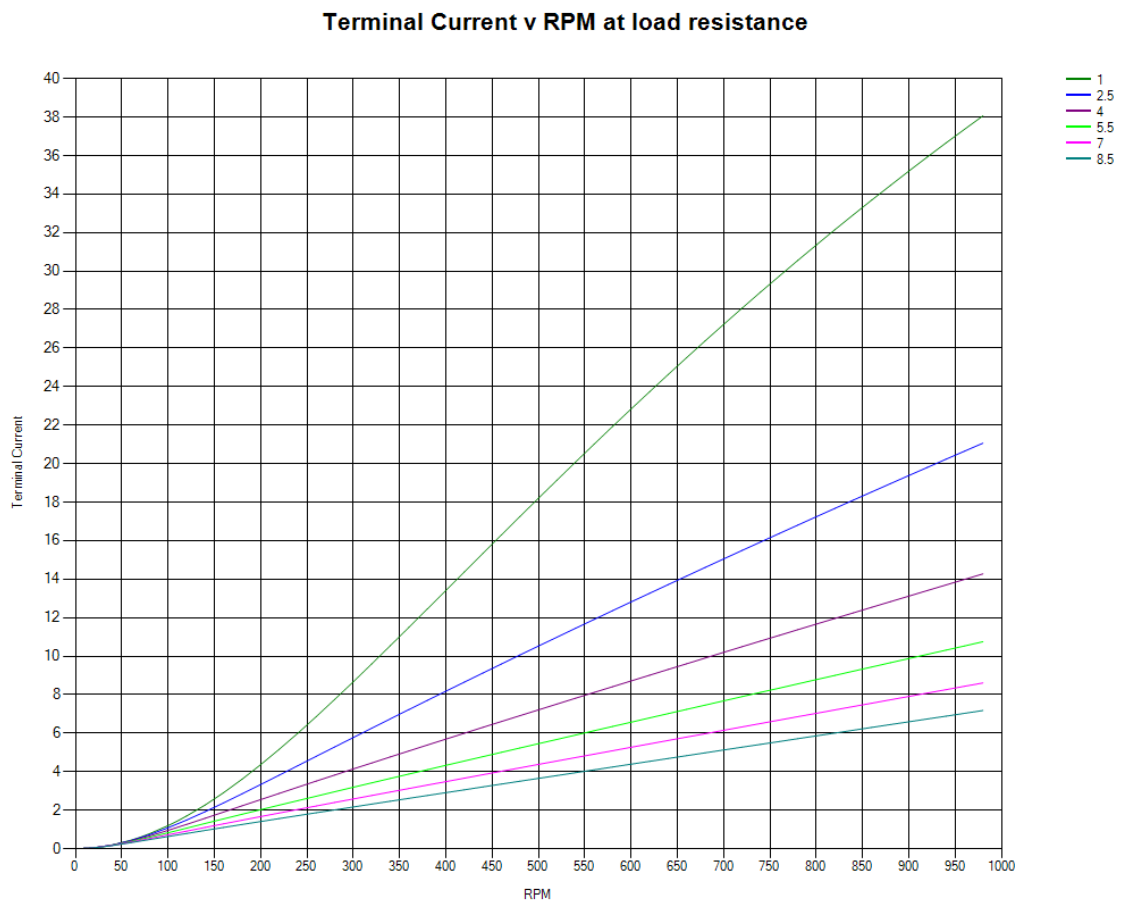
Graph: Power vs RPM @ Load Resistances (Ω)



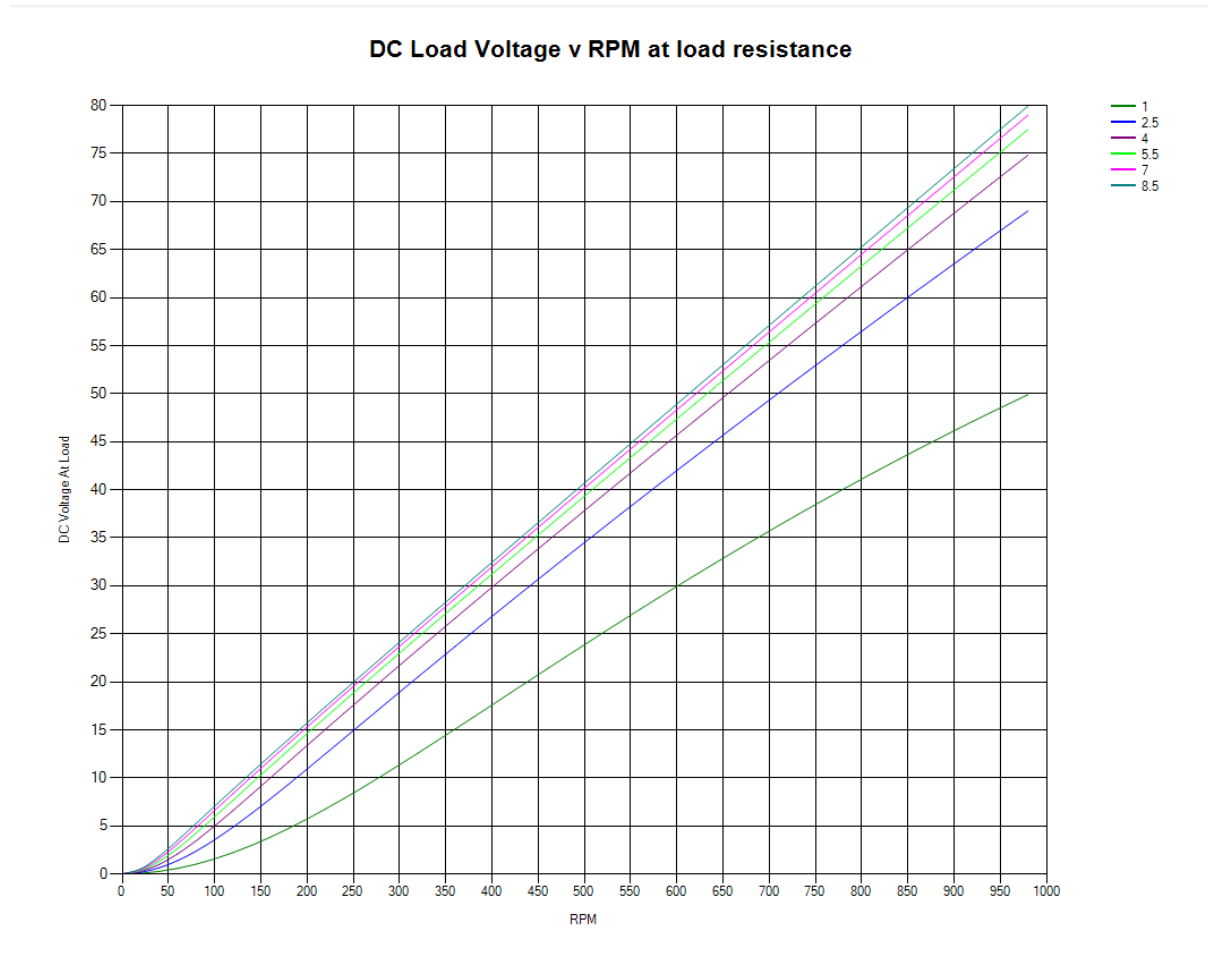
Graph: Terminal Voltage vs RPM @ Load Resistances



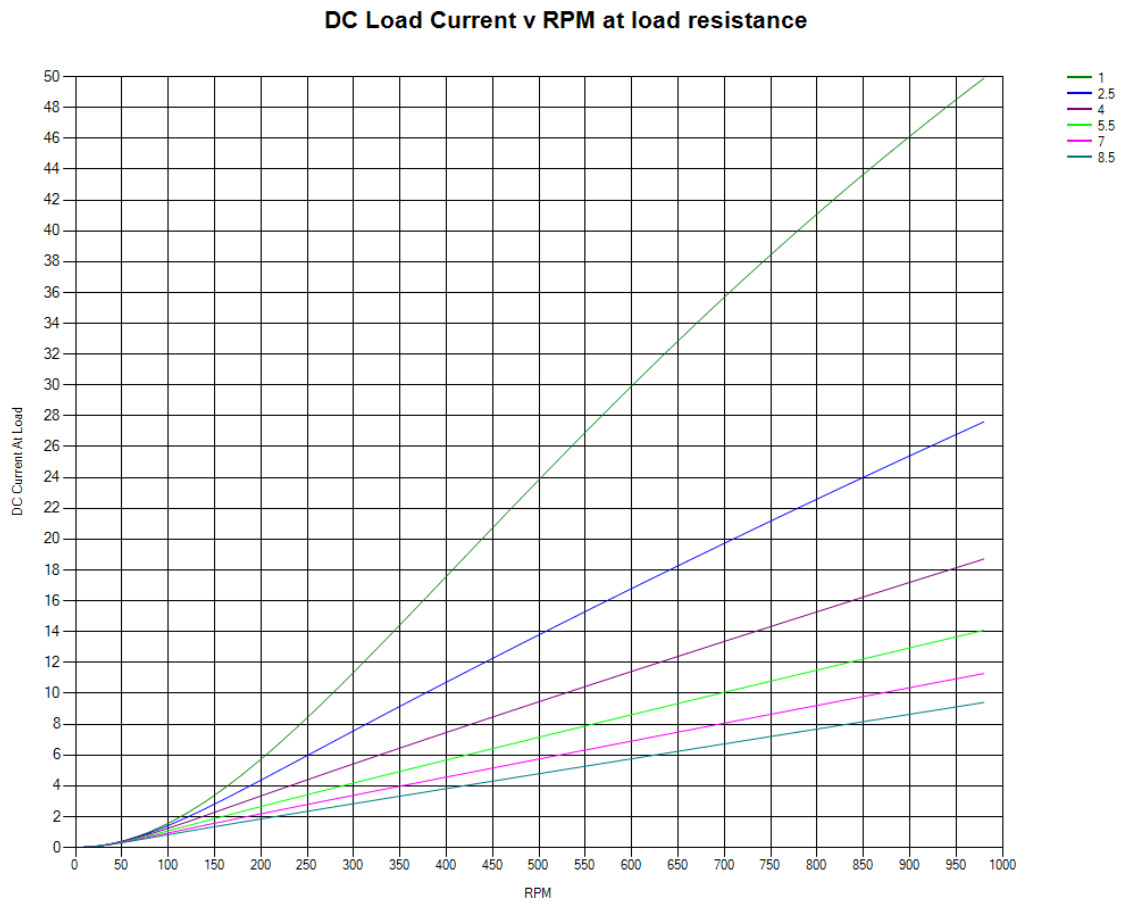
Graph: Terminal Current vs RPM @ Load Resistances



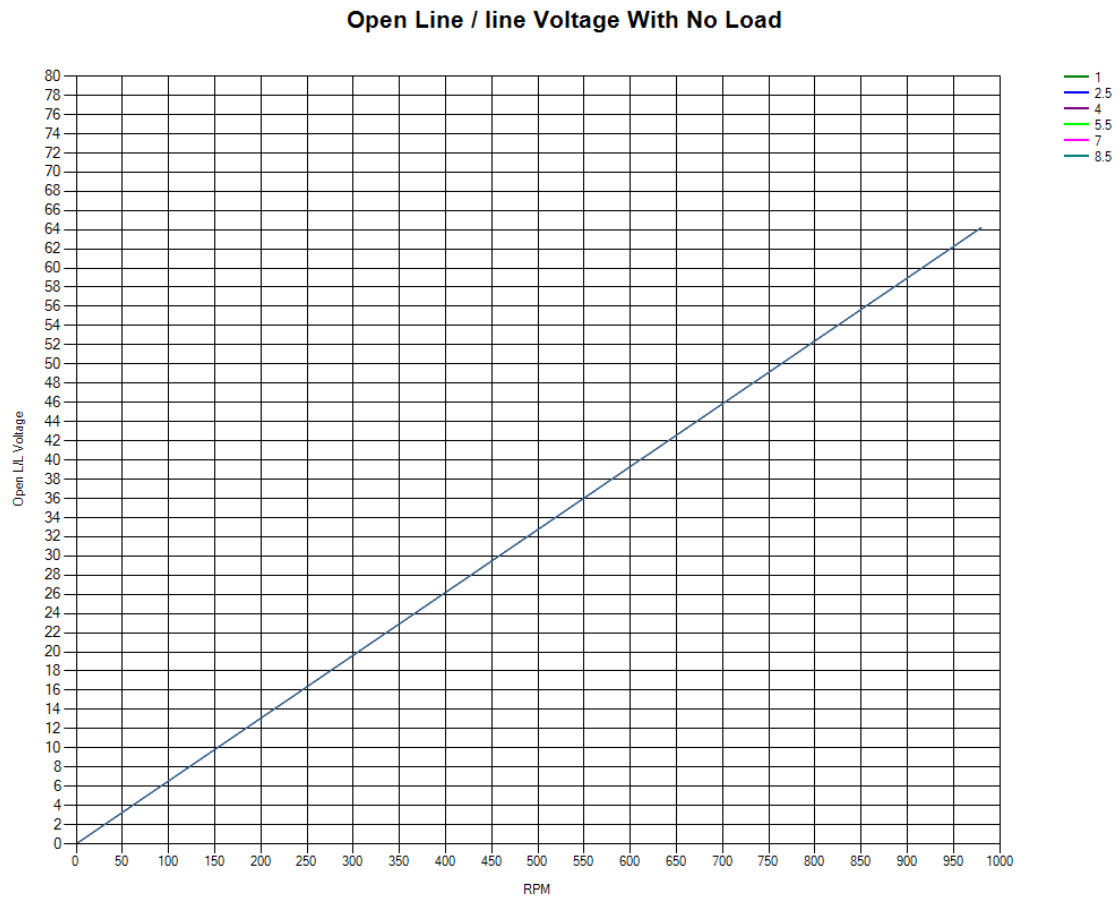
Graph: DC Load Voltage vs RPM @ Load Resistances



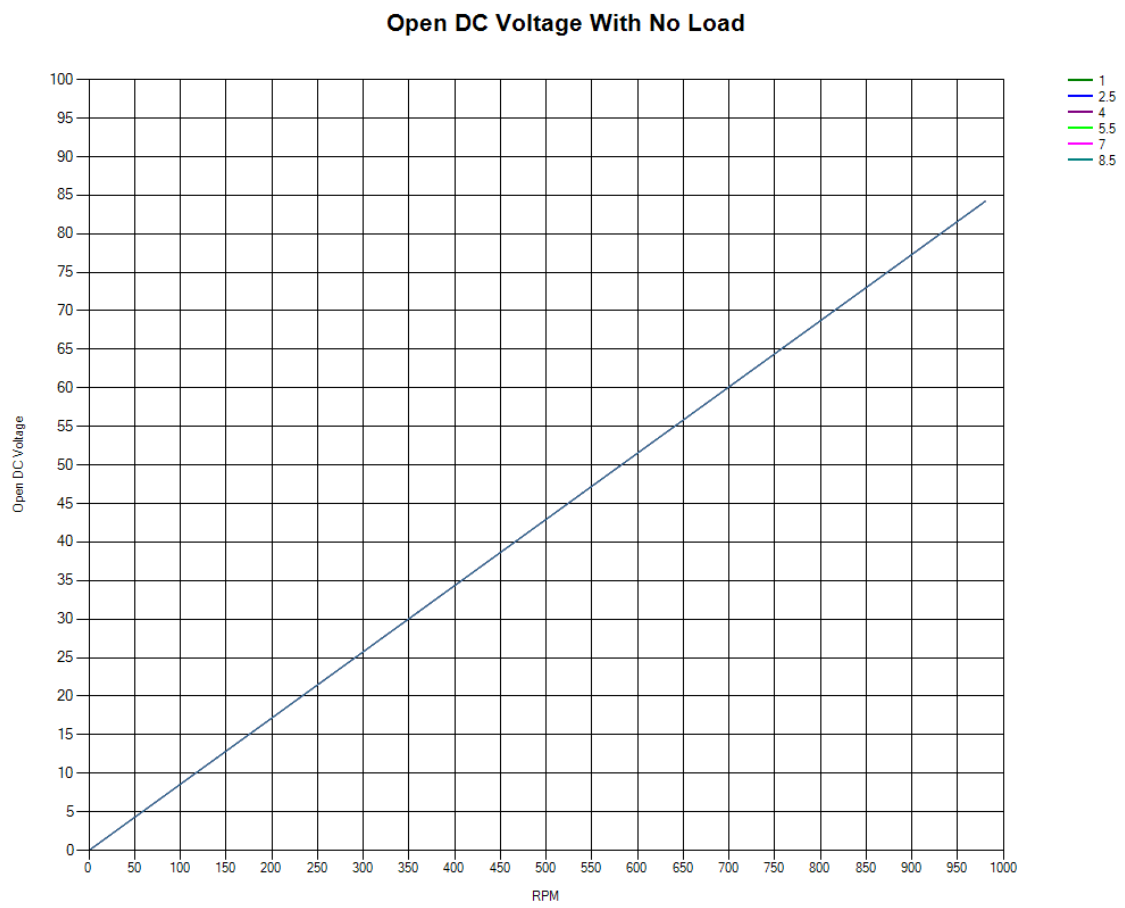
Graph: DC Load Current vs RPM @ Load Resistances



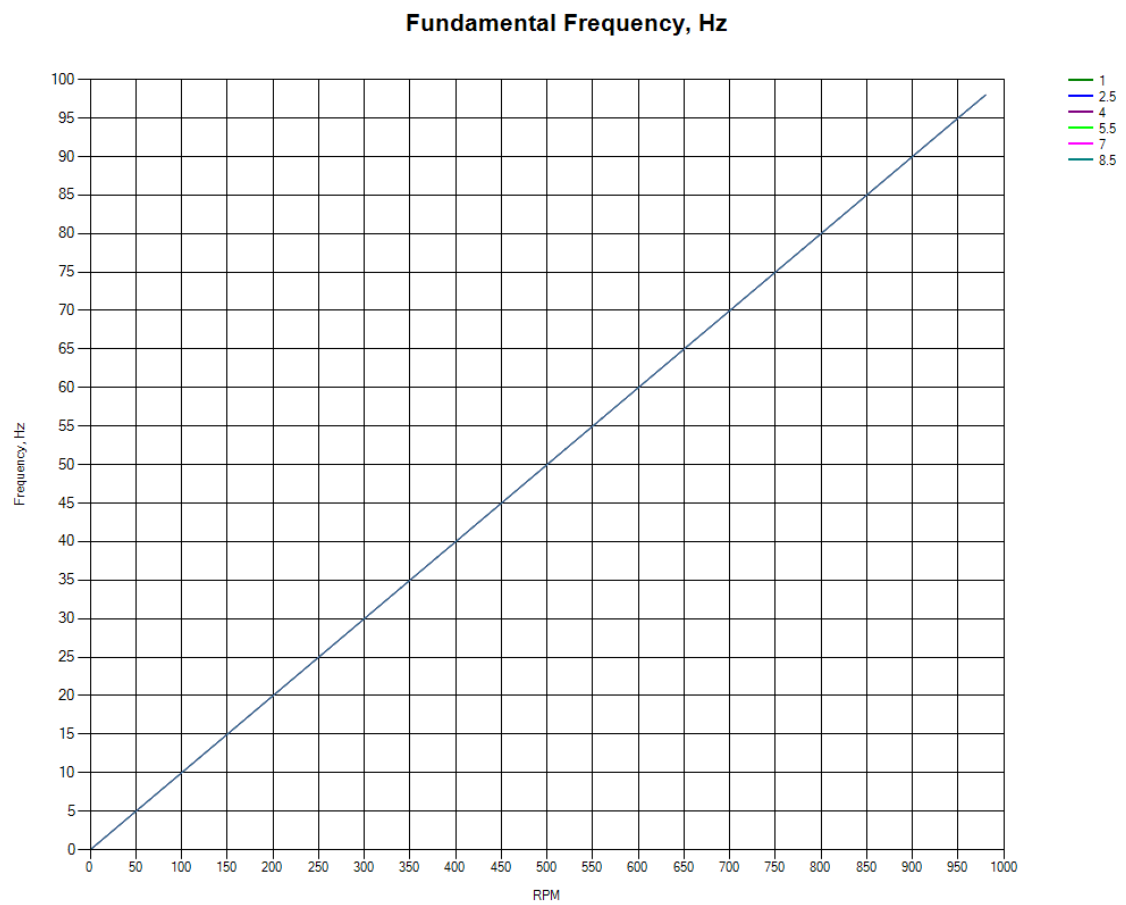
Graph: Open RMS L/L Voltage vs RPM



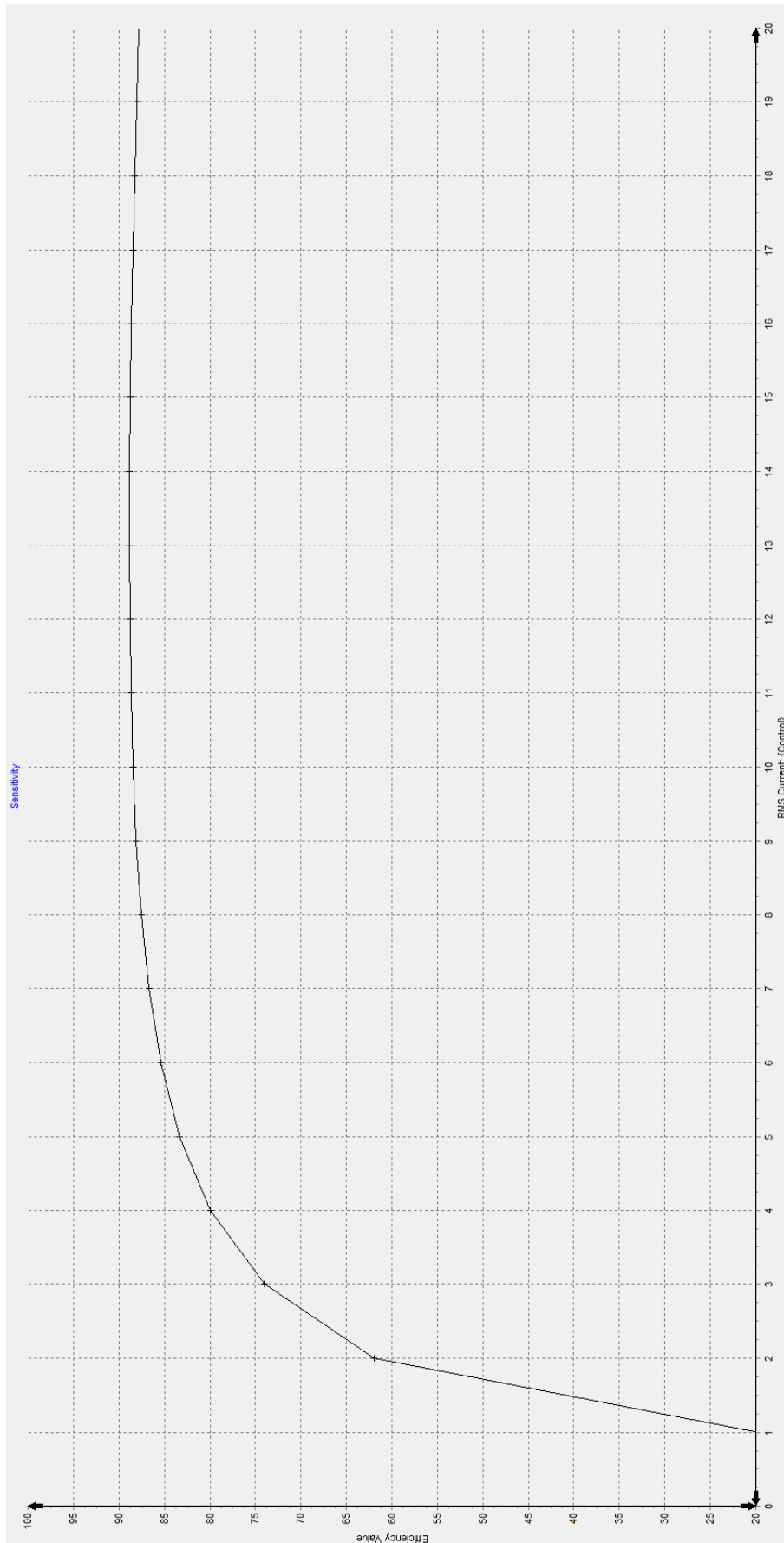
Graph: Open DC Voltage vs RPM



Graph: Fundamental Frequency vs RPM



Graph: Efficiency vs Current @ 750 RPM Constant



Graph: Cogging Torque

